

THE LEAP





Communities are full of creativity, ideas, and ingenuity and that's exactly what community-led climate action requires. The Leap are committed to putting power, resources, and genuine support directly into the hands of communities across Bradford and Keighley — so they can shape the climate future they want to see.

What is truly exciting is our work that involves community partners bringing a fresh and diverse set of leadership to this work. It's new, it's energising, and as a district, it's precisely what this space needs.

THE LEAP



Engaging communities and individuals

THE LEAP



Community Led Concept Map

01

Listen First

Informal Coffee mornings in community spaces
Be available -Zoom calls after business hours

DISCOVER

02

Small gatherings

Let's talk about the funding , what similar community climate action projects do we know of , introduce games and activities around CA to encourage dialogue and ideas

DISCOVER

03

Bring groups together

Bring existing Grassroots groups together and lead on concerns e.g. cost of living, local services and how this could translate into climate action projects.

DEFINE

04

"Go see" and external CA agencies

Invite agencies like SAIL and build inspiration towards carbon reduction, biodiversity and sustainability.. "Go see "existing CA community work and workshops through Bradford Education environment and similar

DEFINE

08

Underpinning values and Learnings

Environmental justice at the heart
Capture learnings, journals, Baseline evaluation & methods to capture learnings through Peer-2-Peer meetings between partners.

DELIVER

07

Delivery

Ensure partner ideas have their local decision makers , community needs at the centre , delivery between partners are unique and builds capacity and has ambition to tell their story.

DELIVER

06

Co-design & Project plan developed

Ideas that address community priorities that are also climate action positive and shaping this into a Project plan with milestones. for Delivery

DEVELOP

05

Steering groups and Champions

Begin co creation of ideas with steering groups & champions with community led decision making. Connect groups to strategic organisations & local authority to help shape their needs into CA ideas

DEVELOP

Creative ambitions rooted in environmental change

THE LEAP



A young boy with dark hair, wearing a black jacket over a white t-shirt and black pants, stands inside a large, abstract sculpture made of thick, light-colored wood. The sculpture is shaped like a large, open embrace. The boy is smiling and has his arms outstretched, touching the inner curves of the sculpture. The scene is outdoors, with lush green trees in the background and a street with cars visible in the distance. The sky is clear and blue. The text 'The Big Hug : Eco Sculpture Park' is overlaid in the bottom left corner in a white, sans-serif font.

The Big Hug : Eco Sculpture Park

↑ THE BIG HUG: THE LEAPS BRAND NEW ECO-SCULPTURE

The art installation, titled "Big Hug", was placed on a strip of land on the Latimer Street intersection of Leeds Road and Sticker Lane. It is the centrepiece of a new "eco-park" featuring more than 300 shrubs and pollinator-friendly plants.

The sculpture takes inspiration from nature and was designed to encourage people living nearby to use local green spaces.

"Conversations with those living in the area led us towards a sculpture that was focused on the importance of community and the environment," said sculptor John Merrill, who is originally from Yorkshire.





The "Living Wall" Peace Installation

↑ "LIVING WALL" PEACE INSTALLATION

The Living Wall is a community-driven initiative funded through LEAP , bringing creativity and colour to the heart of the local area. Led by acclaimed artist Shiraaz Ali, the project invited residents to actively shape and contribute to the design that promoted a deep sense of ownership and pride in the finished artwork.

Working collaboratively with community members of all ages, Shiraaz guided participants through the artistic process, ensuring local stories, identities, and voices were woven into every element of the wall.



Artist: Shiraaz Ali





THE LEAP



DREAM ACT INSPIRE

A bold, community-led climate action programme rooted in social justice, lived experience and cultural practice. Delivered over 3.5 years, it demonstrates how coordinated, grassroots action in marginalised urban communities can generate meaningful local environmental change while producing nationally relevant learning and models for replication.

The programme is funded by National Lottery Community Fund (Climate Action Fund) and Bradford Council. Support focuses on densely populated, disproportionately polluted neighbourhoods across Bradford District, supporting communities historically under-represented in climate leadership to become designers, owners and leaders of climate solutions. Fairness, inclusion and equity are embedded throughout, alongside practical, impactful action that connects climate, health, wellbeing and place.

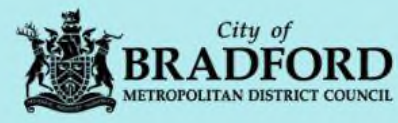
Led by The Leap, Dream – Act – Inspire will support six community partners to co-design and deliver locally tailored Climate Action funding .

THE LEAP



DREAM ACT INSPIRE

Community Partners



SUMMARY TIMELINE



Drawing inspiration and creating awareness

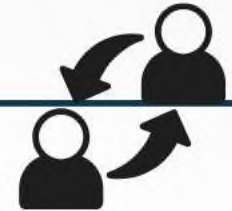
THE LEAP



PRACTICAL INITIATIVES



SAIL



First Step-Awareness

A first step towards how we affect the planet and some reflection on lifestyle and choices

Activity in Small groups

Reflection

Local Policy and Targets

Working with the Local authority and engage in learnings about Net Zero targets

Empowering

Connecting

Increasing Community knowledge

Engage with CA experts to help shape Community projects do not go against Climate action best practice. Attend courses and events

Discover

Belong

Hands on Habitat Creation

Practical ways to initiate platforms for conversations, develop skills between partners. Upskill the community

Grow

Thrive

Peer-to-Peer Learning

Building and sharing knowledge, techniques, tools towards unique Climate positive projects

Building Networks

Share and Inspire

Engaging climate action experts for communities

THE LEAP



**DREAM
ACT
INSPIRE**



1



2



3



4



5



FROM IDEAS TO LONG TERM LEGACY

Community Ownership

The Community own the assets, decisions and delivery

Social & economic benefits

Climate Impact

Lasting Skills and Leadership

Trained and upskilled communities. Confident to continue. Part of influencing a local and potentially national network

More Growing Hubs

Community capacity

Embedding Climate Action

Climate priorities integrated into everyday community spaces — homes, faith groups, local organisations and businesses

CA Experts

Upskilling

Shared Learning & Influence

Learning captured and shared to shape future funding, policy and local climate strategy

Film +Web

National Learning

Outcome

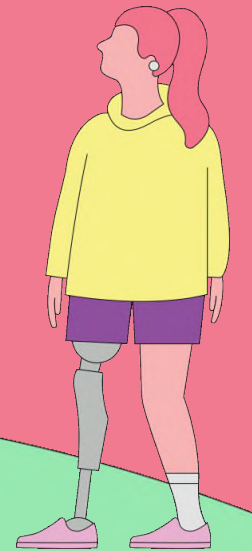
Climate action that improves daily life, builds resilience and outlasts any single funding cycle

Measure success

Carbon Literate Communities

DREAM
ACT
INSPIRE

Thank you



THE LEAP

